



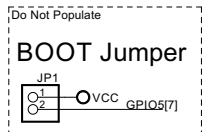
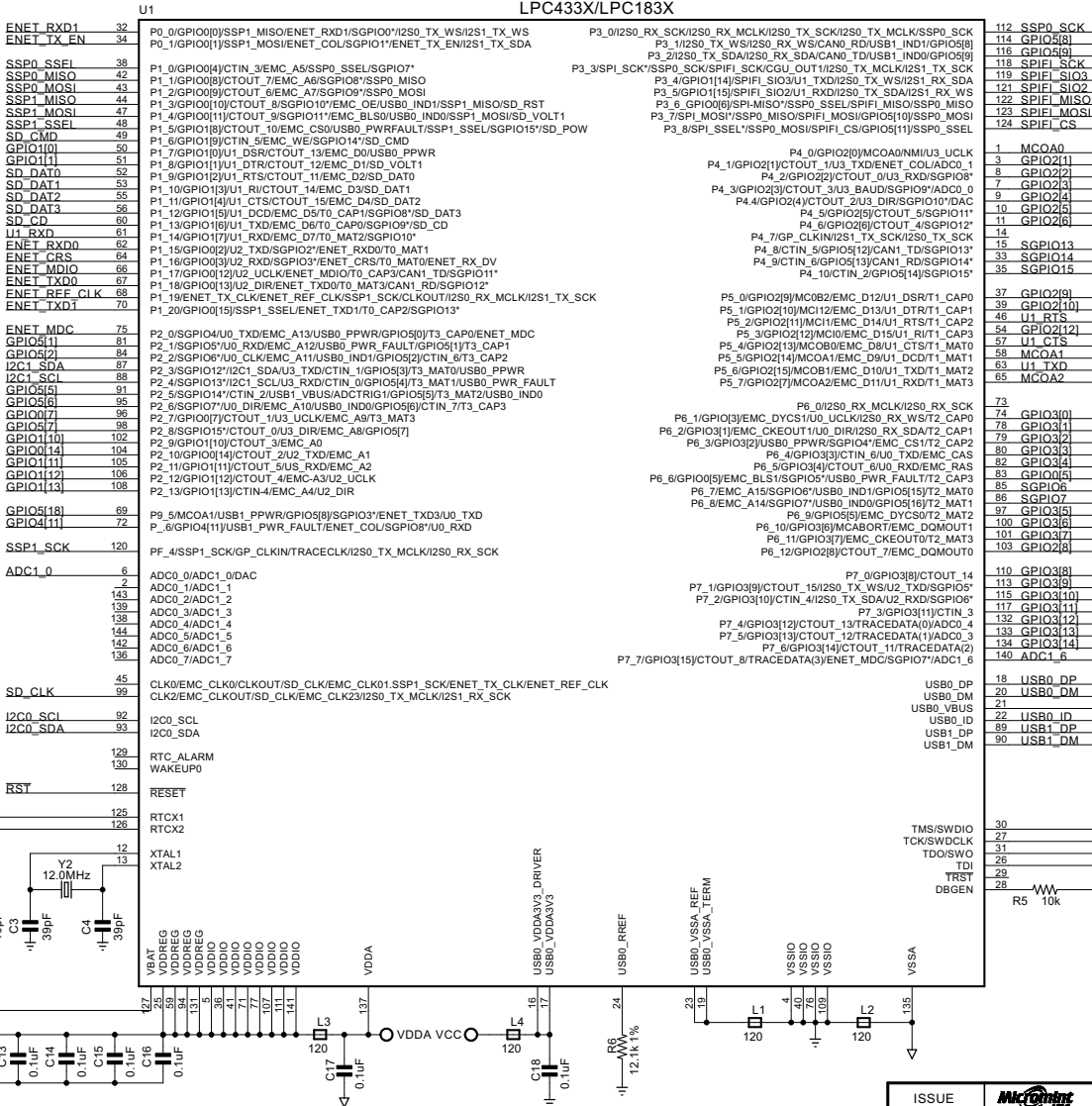


Licensed under  
CC BY-SA 3.0

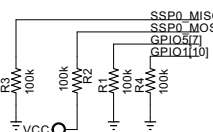
Designed By Micromint USA

## Processor

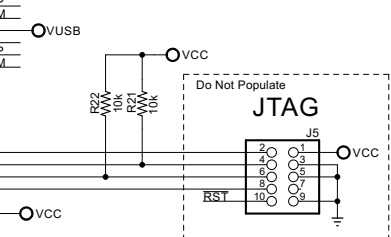
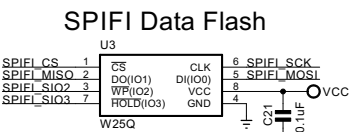
LPC433X/LPC183X



BOOT Jumper	
Device	JP1
SPIFI Flash	OFF
USB Device	ON



BOOT Pins				
Device	BOOT3	BOOT2	BOOT1	BOOT0
SPIFI Flash	0	0	1	0
USB Device	0	1	1	0



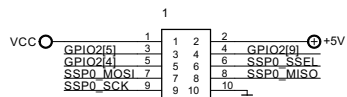
ISSUE	Micromint LLC	www.micromint.com	
DRAWN	PJC	TITLE	MCU, Boot Options, Coin Battery
CHECKED	PJC	DATE	5/10/13
Approved	JA	DRG N°	BAM200
		FILE:	BAM200-A
			PAGE: 2 / 4



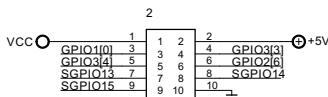
Licensed under  
CC BY-SA 3.0

Designed By Micromint USA

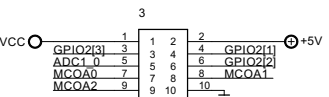
### Gadgeteer Sockets



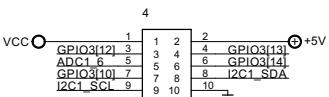
O, S, or X



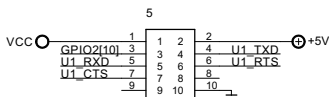
I, P, S, U, or Y



A, O, or P

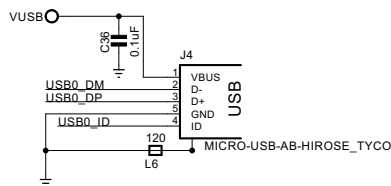


A, I, or Y

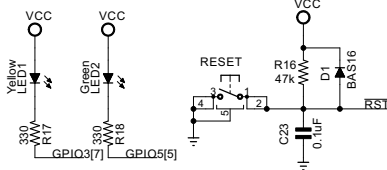


K, U, or X

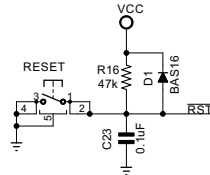
### USB Device Port



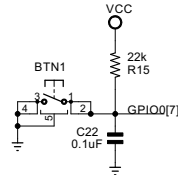
### User LEDS



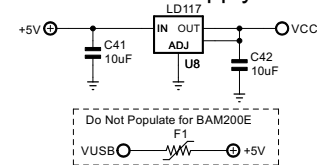
### Reset



### User Push Button



### Power Supply



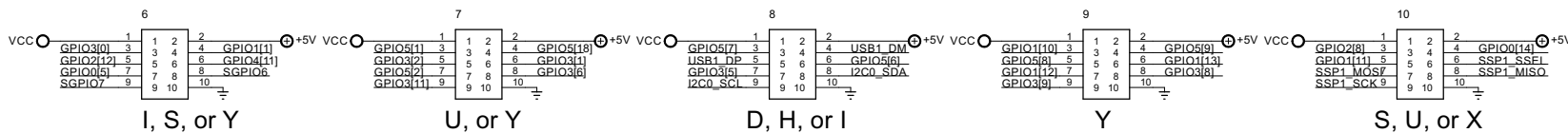
ISSUE	<b>Micromint</b> LLC	www.micromint.com	
DRAWN	TITLE		REV
PJC	Gadgeteer Sockets,LEDs, PB, USB Device		A
CHECKED	DATE	DRG N <sup>o</sup>	
PJC	5/10/13	BAM200	
Approved	FILE: BAM200-A	PAGE: 3/4	
JA			



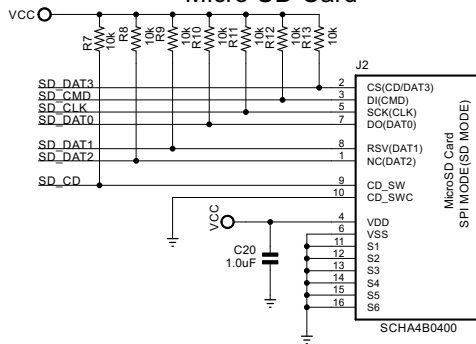
Licensed under  
CC BY-SA 3.0

Designed By Micromint USA

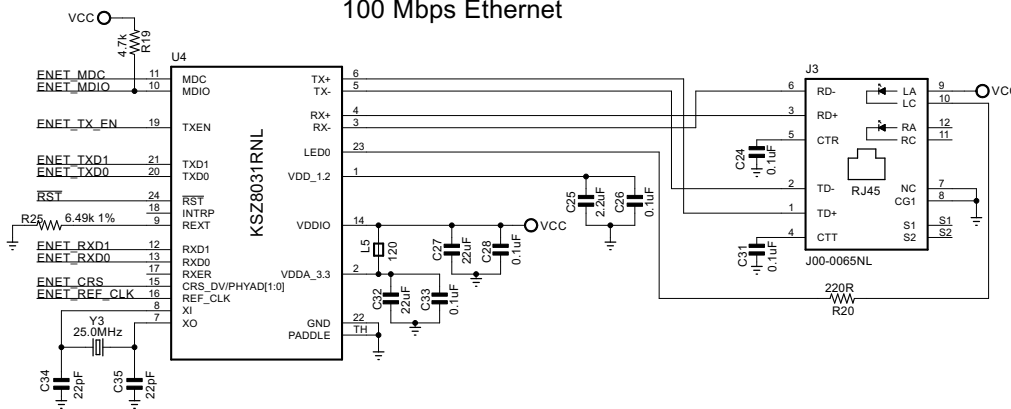
### Gadgets Sockets



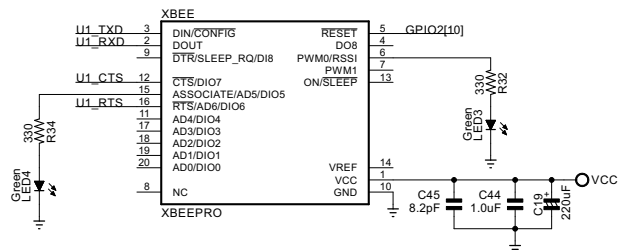
### Micro SD Card



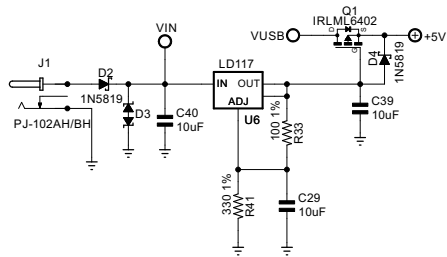
### 100 Mbps Ethernet



### XBEE Interface



### Power Supply 7 - 15 VDC



ISSUE	L LC	www.micromint.com	
DRAWN	TITLE		REV
PJC	BAM200E		A
CHECKED	DATE	DRG N <sup>o</sup>	
PJC	5/10/13	BAM200	
Approved	FILE: BAM200-A		PAGE: 4/4
JA			